

SPICE-Equivalent circuit model library

Table 1. Equivalent circuit data

Part Number	L (μ H)	F _{res} (MHz)	C1 (pF)	R1 (Ω)	R2 Nominal DCR of winding (Ω)
HCM0503-R20-R	0.2	187.0	3.62	5052.12	0.002
HCM0503-R35-R	0.35	132.9	4.10	5577.22	0.0039
HCM0503-R47-R	0.47	111.1	4.37	5875.45	0.0065
HCM0503-R75-R	0.75	83.5	4.84	6381.23	0.0085
HCM0503-1R0-R	1	70.1	5.16	6714.00	0.01
HCM0503-1R5-R	1.5	54.7	5.64	7212.68	0.017
HCM0503-2R2-R	2.2	43.3	6.14	7717.69	0.023
HCM0503-3R3-R	3.3	33.8	6.71	8290.92	0.036
HCM0503-4R7-R	4.7	27.3	7.25	8825.53	0.054
HCM0503-5R6-R	5.6	24.5	7.54	9103.03	0.063
HCM0503-100-R	10	17.2	8.56	10085.13	0.122
HCM0503-150-R	15	13.4	9.36	10834.20	0.138
HCM0503-220-R	22	10.6	10.18	11592.78	0.26

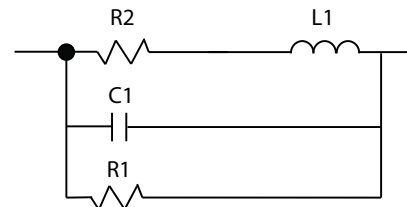


Figure 1. Equivalent circuit

Disclaimer

The data provided is for reference and is intended for evaluation purposes only. Users should verify all intended results in the end application.

Eaton
Electronics Division
 1000 Eaton Boulevard
 Cleveland, OH 44122
 United States
www.eaton.com/electronics

© 2018 Eaton
 All Rights Reserved
 Printed in USA
 Publication No. HCM0503 Spice
 April 2018