

SPICE-Equivalent circuit model library

Table 1. Equivalent circuit data

Part Number	L (μ H)	F _{res} (MHz)	C1 (pF)	R1 (Ω)	R2 Nominal DCR of winding (Ω)
HCM1A0503-R20-R	0.2	185.3	3.69	245.41	0.0021
HCM1A0503-R22-R	0.22	175.1	3.76	270.06	0.0021
HCM1A0503-R33-R	0.33	137.5	4.06	405.75	0.0039
HCM1A0503-R35-R	0.35	132.7	4.11	430.44	0.0039
HCM1A0503-R47-R	0.47	111.3	4.35	578.70	0.0065
HCM1A0503-R68-R	0.68	89.3	4.67	838.51	0.0082
HCM1A0503-R75-R	0.75	84.3	4.75	925.18	0.0085
HCM1A0503-1R0-R	1	71.0	5.02	1235.00	0.0104
HCM1A0503-1R5-R	1.5	55.8	5.43	1855.51	0.0171
HCM1A0503-2R2-R	2.2	44.4	5.85	2725.58	0.0225
HCM1A0503-3R3-R	3.3	34.9	6.32	4095.01	0.0364
HCM1A0503-4R7-R	4.7	28.2	6.76	5840.54	0.054
HCM1A0503-5R6-R	5.6	25.4	6.99	6963.82	0.063
HCM1A0503-6R8-R	6.8	22.7	7.26	8462.64	0.081
HCM1A0503-100-R	10	18.0	7.82	12464.27	0.09

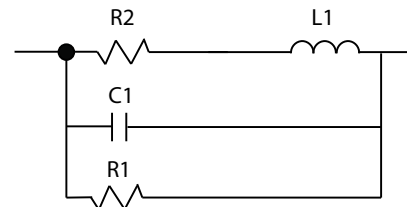


Figure 1. Equivalent circuit

Disclaimer

The data provided is for reference and is intended for evaluation purposes only. Users should verify all intended results in the end application.

Eaton
Electronics Division
 1000 Eaton Boulevard
 Cleveland, OH 44122
 United States
www.eaton.com/electronics

© 2018 Eaton
 All Rights Reserved
 Printed in USA
 Publication No. HCM1A0503 Spice
 April 2018